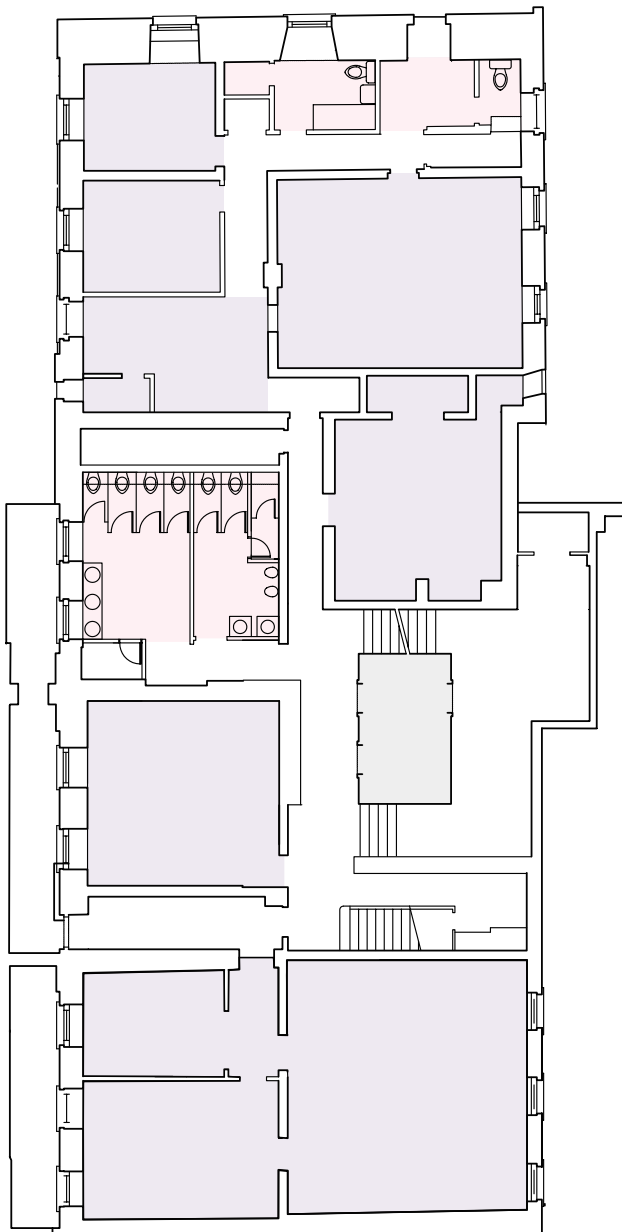
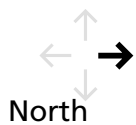


Bloomsbury House
74-77 Great Russell Street
London WC1

Lower Ground - 1,790 sq ft

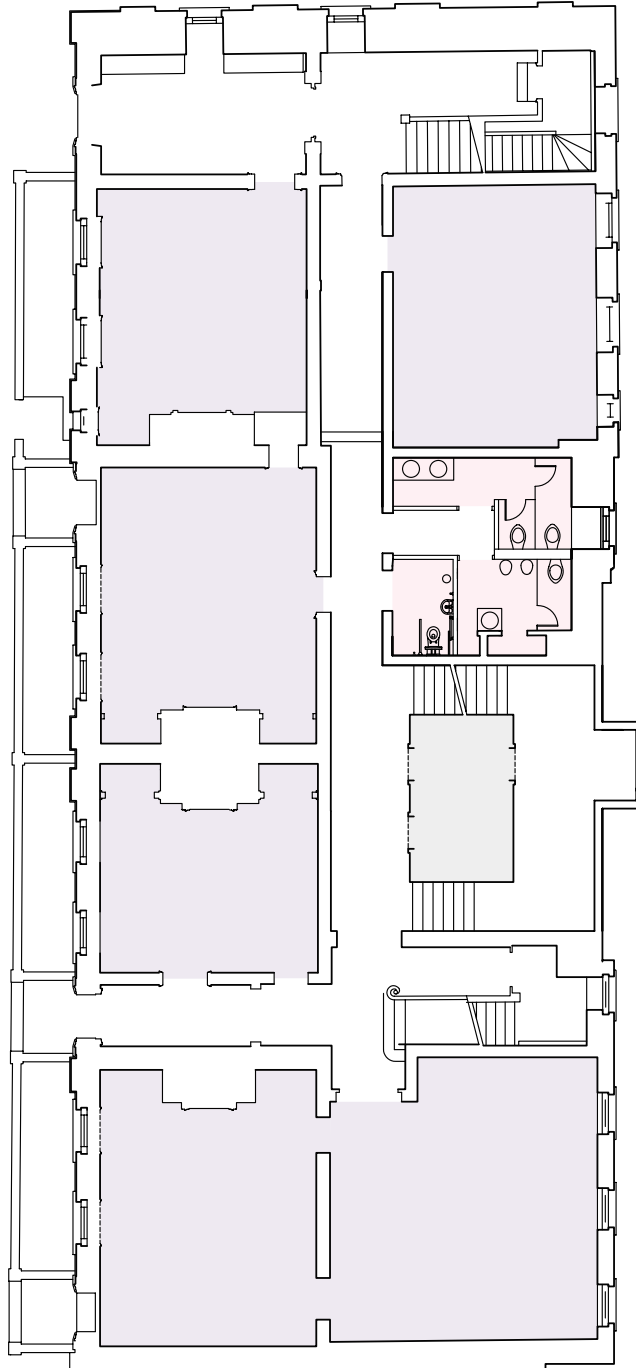
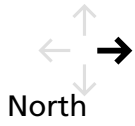
- Office
- Lift
- WC



Bloomsbury House
74-77 Great Russell Street
London WC1

Ground - 2,215 sq ft

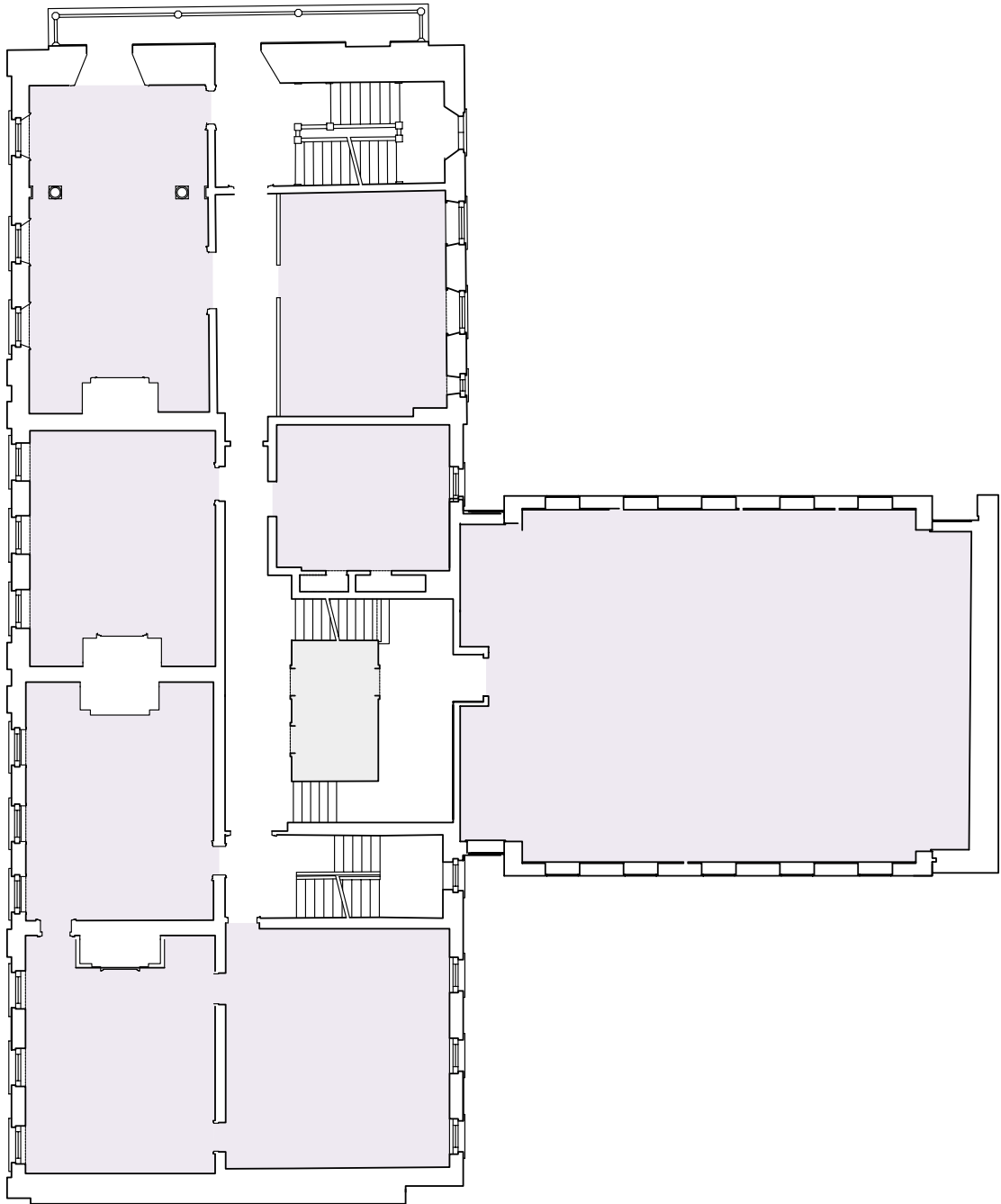
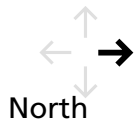
- Office
- Lift
- WC



Bloomsbury House
74-77 Great Russell Street
London WC1

First - 4,555 sq ft

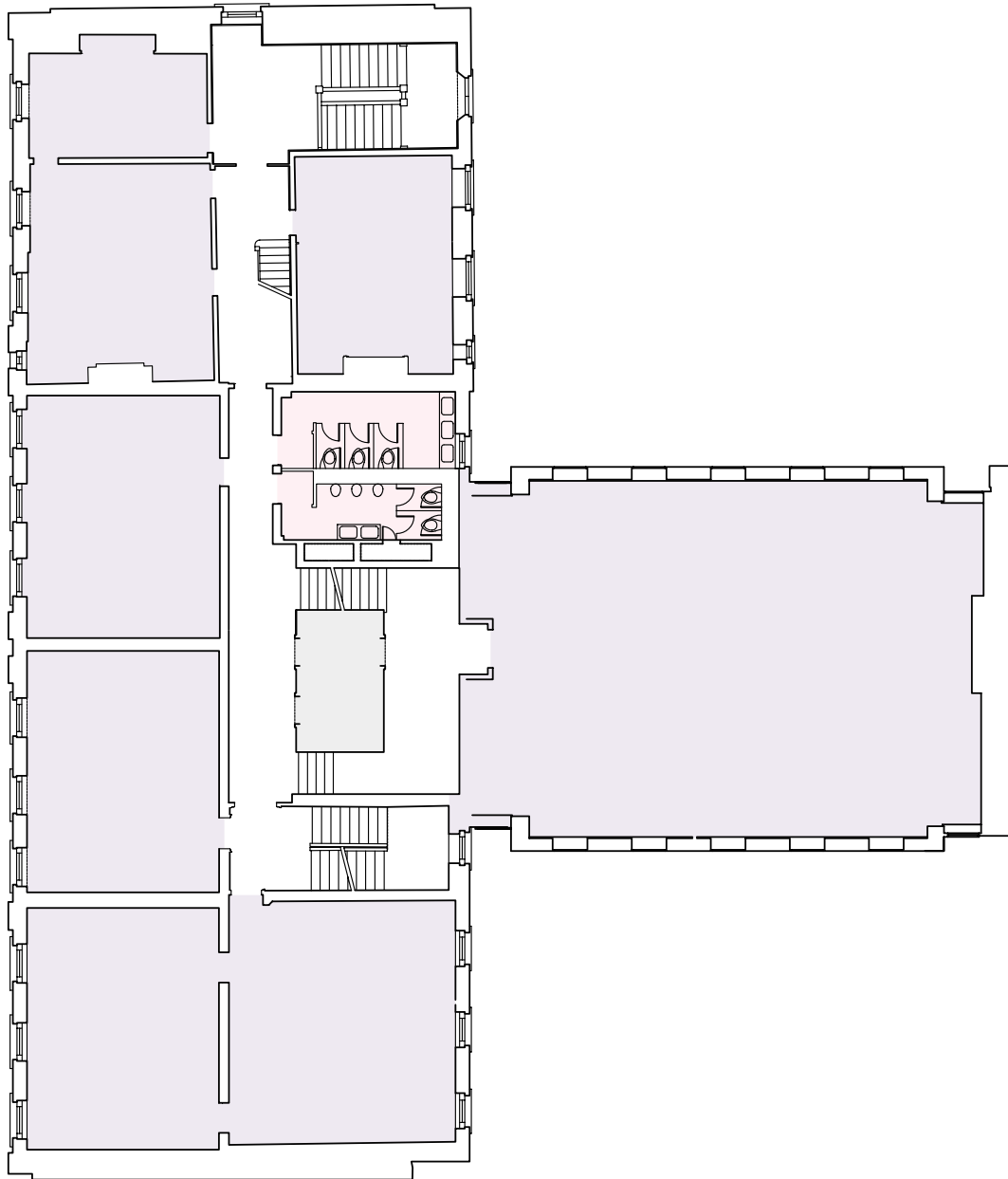
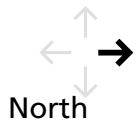
- Office
- Lift
- WC



Bloomsbury House
74-77 Great Russell Street
London WC1

Second - 4,250 sq ft

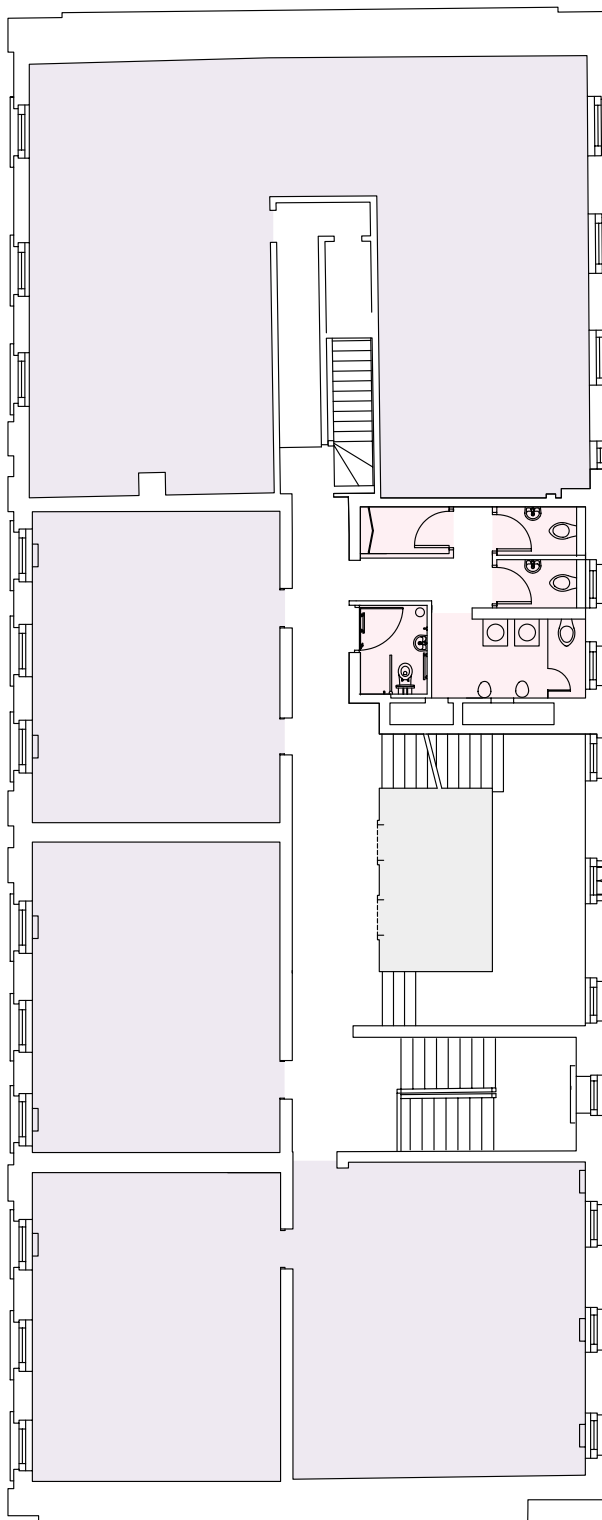
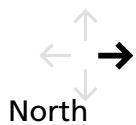
- Office
- Lift
- WC



Bloomsbury House
74-77 Great Russell Street
London WC1

Third - 3,150 sq ft

- Office
- Lift
- WC



Bloomsbury House
74-77 Great Russell Street
London WC1

Fourth - **2,405 sq ft**

- Office
- Lift

